



SynerGEE Gas Model Builder



Integrate External Data

SynerGEE® Gas Model Builder provides a seamless integration between SynerGEE Gas and your geospatial information system (GIS) data. Its robust and flexible data management capability allows you to import data into SynerGEE from a variety of external sources, including shape files, CAD files and ArcInfo™ coverages, as well as personal and enterprise ArcGIS® geodatabases.

With the ease-of-use you've come to expect from SynerGEE, the model Builder converts GIS point data, such as valves and regulators, into linear, non-pipe facilities. SynerGEE Model Builder's GIS integration capability provides you with an automated process for efficient model maintenance and revision.

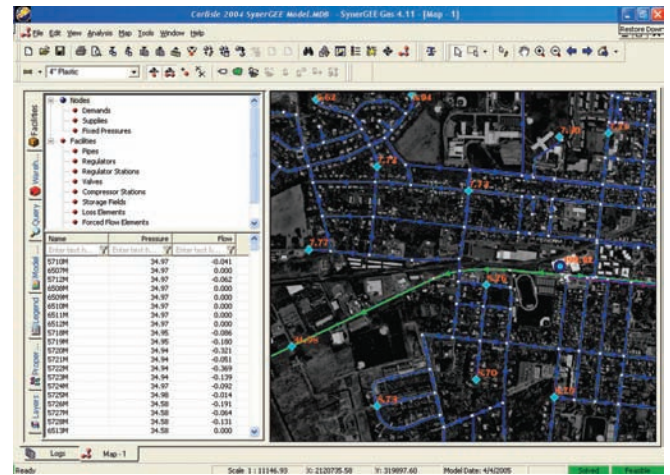
Control Your Model

SynerGEE Model Builder lets you filter and query data from external sources so that you can build your model using only the data you need from each source. You can import multiple pipe and facility source model layers at once, rather than importing each layer individually. You can also map source file attributes to SynerGEE facility data and supplement any missing or incomplete GIS attributes with your model data. This includes regulator station details, internal pipe diameters, pipe roughness values, source node properties, customer demands and specific node names. Save your imported model attributes and configurations to rebuild your model whenever you choose, including weekly and monthly.

Validate and Enhance Data

The SynerGEE Model Builder validates imported facility and node data and lets you make necessary corrections to ensure proper functionality. Its spatial and attribute tools can be used to clean topology, identify bottlenecks and report missing attribute data. Reported errors are saved to a browser file and can be viewed and corrected in GIS.

Model Builder also drastically streamlines the time required to build your SynerGEE models. After converting your initial GIS data, SynerGEE Model Builder stores your settings so that you can re-build your models with the simple click of a mouse.



GL Industrial Services

Holywell Park, Ashby Road, Loughborough

Leicestershire LE11 3GR, UK

Phone: +44 (0)1509 282000

Fax: +44 (0)1509 282525

software@gl-group.com · www.gl-group.com/software