

SynerGEE Facilities Management Module

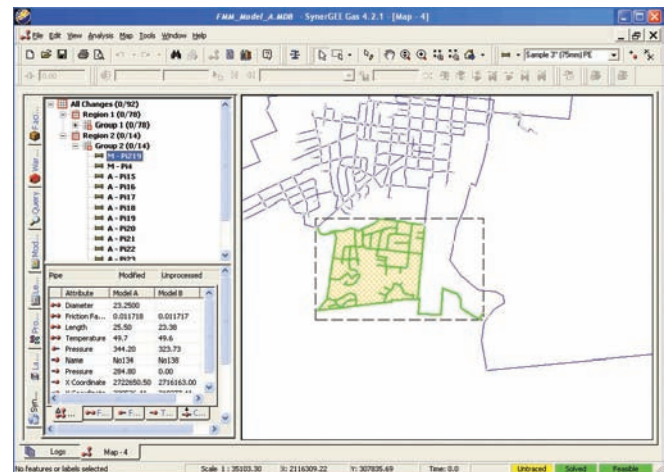


Graphically Compare Models

SynerGEE® Gas's Facilities Management Module (FMM) allows you to synchronize your gas distribution network models with GIS updates without rebuilding your model and losing valuable hydraulic data. You can review changes spatially and selectively accept or reject individual or groups of changes to merge into the model.

While using FMM, you can perform routine SynerGEE functions such as adding, deleting and modifying nodes and facilities and running hydraulic analyses.

FMM offers you flexibility when comparing models. You can specify that FMM compare only pipes and regulators or only certain attributes of those pipes and regulators. You can also control the tolerances used for comparisons so differences that you consider insignificant are not flagged.



Synchronize Updates into a Model

When synchronizing changes into a model, you can graphically view each feature flagged and choose to accept or reject each change. Each change is classified as an add to, modification of or deletion from the base model.

Streamline Maintenance Tasks

FMM allows you to quickly and easily:

- Determine the differences between two models or between a GIS data set and a model
- View a list of proposed changes
- Selectively apply proposed changes you want to a base model
- Evaluate the impact of recent GIS updates to your SynerGEE model

New spatial detection functionality in FMM groups adjacent changes together. Deleted changes can then be viewed side-by-side with the existing model both graphically in the map and as a list of attributes. Easy-to-use tools enable you to accept or reject an entire group (e.g. subdivision or new development) or the individual changes in that group.

GL Industrial Services

Holywell Park, Ashby Road, Loughborough
Leicestershire LE11 3GR, UK

Phone: +44 (0)1509 282000

Fax: +44 (0)1509 282525

software@gl-group.com · www.gl-group.com/software