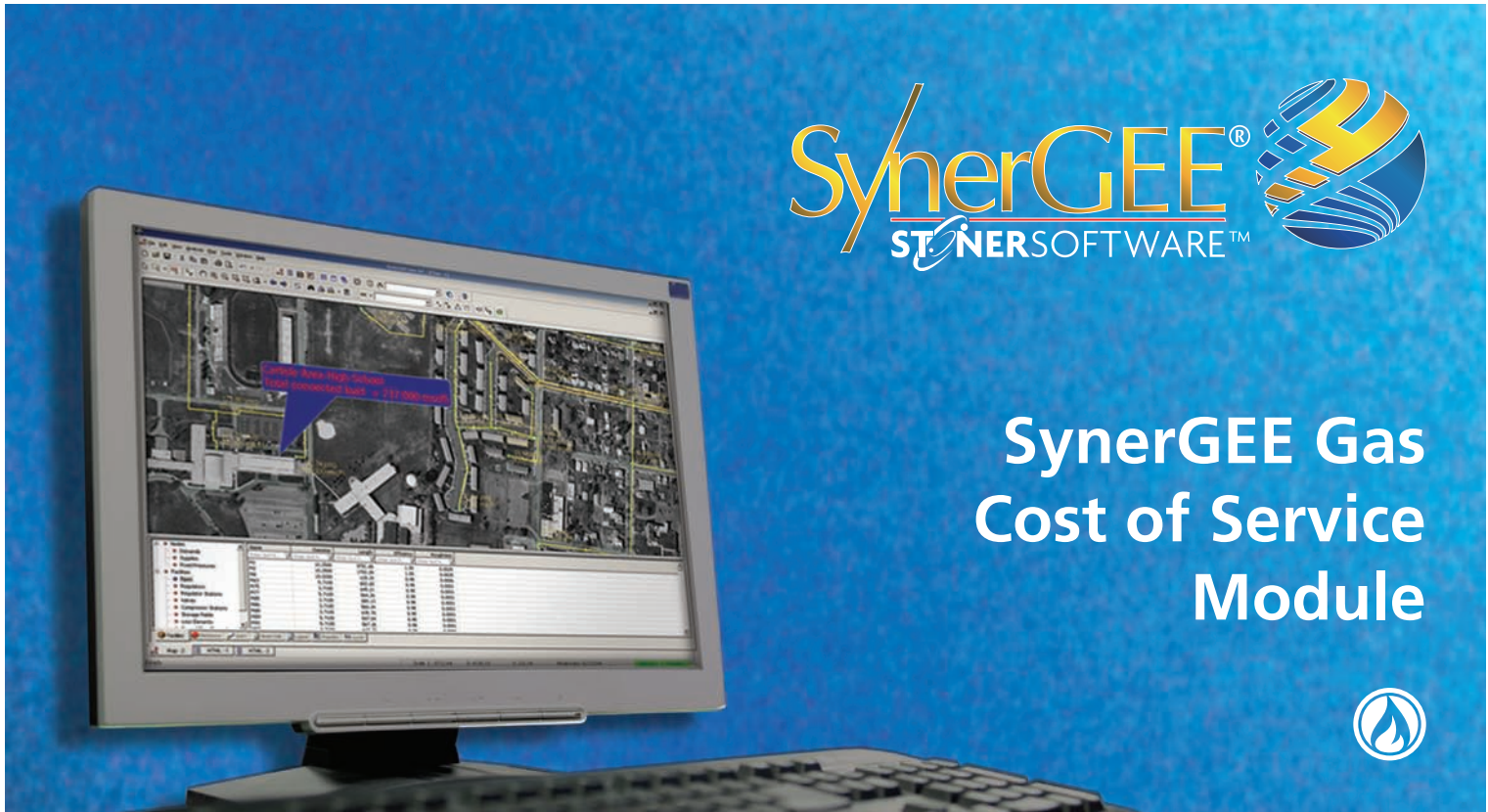


SynerGEE Gas Cost of Service Module

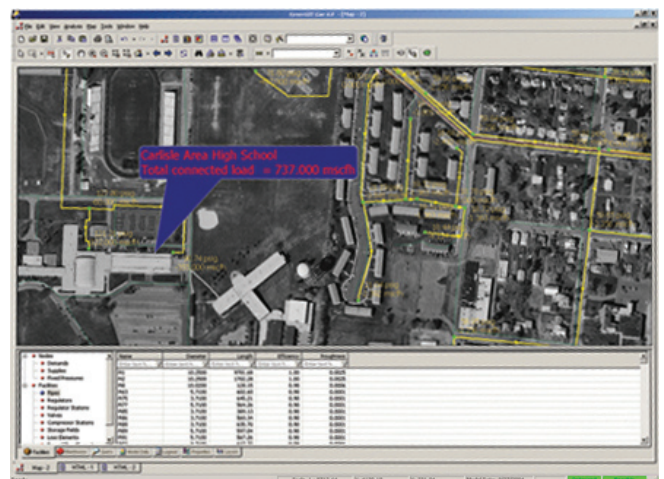


Calculate Cost of Service Data

SynerGEE® Gas's Cost of Service Module (COSM) extends the reporting functionality of the SynerGEE Gas steadystate application. COSM is used with SynerGEE to report the cost of service for gas in a distribution system. Based on the pipe cost (provided in a Capital Cost [CAP] file), the pipe capacity and customer demand on peak day, COSM calculates cost of service data.

Assess Financial Gain

The COSM reports associated costs by tracing the model from node to facility to node. These costs provide insight to the financial assessment of your pipeline system. Whether you are determining the supply cost from node-to-node or the cost of having stub nodes, COSM can help to eliminate or effectively determine the most financially sound method to add new facilities to your system.



Reporting Features

COSM's primary function is to report the costs associated with the nodes and facilities in your model. COSM take associated information from the CAP file and relates it to the nodes and facilities. Using the flow and concentration, it provides investment reports, including:

- Node cost trace report
- Facility cost trace report
- Node supply trace report
- Node stub report

Using a balanced model and a CAP file, COSM reports the cost of service data on nodes and elements.

The CAP file is an ASCII-format data file that lists each facility identifier (FID) in the model and an associated cost value—usually, the cost of pipe installation with depreciation. The associated cost value can be book value or replacement value.

In the cost of service calculation, COSM takes flow, load and concentration, combines them with a rate set in the SynerGEE CAP file and provides cost values associated with your facilities and nodes.

GL Industrial Services

Holywell Park, Ashby Road, Loughborough
Leicestershire LE11 3GR, UK

Phone: +44 (0)1509 282000

Fax: +44 (0)1509 282525

software@gl-group.com · www.gl-group.com/software