



## SynerGEE Gas Area Isolation Module



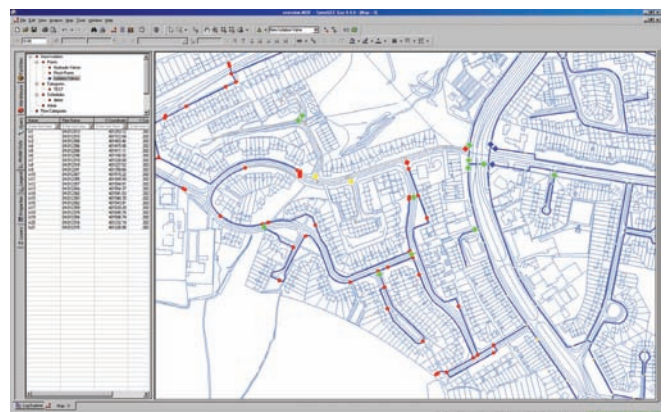
### Prepare for an Emergency

The U.S. Department of Transportation requires that gas operators develop and maintain an Emergency Operating Plan. SynerGEE<sup>®</sup> Gas's Area Isolation Module (AIM) provides you with the tools you need to simulate the isolation of user-selected areas of a gas network for emergency planning, maintenance or other operational needs.

AIM also enables you to analyze and generates detailed reports on the effect of area isolation on remaining network pressure and flow.

### Accurate Isolation Analysis

Combined with SynerGEE's traditional steady-state functionality, AIM is useful in planning future system outages or determining what happens when an emergency valve is closed. You can also perform a complete analysis that isolated the system then hydraulically balances the modified model to identify which customers are effected by an outage. AIM works within SynerGEE's user-friendly interface so you can use your model customer information system (CIS) data.



## Enhanced Features

AIM delivers value-added features, including:

- Quick identification of valves that isolate areas in your network
- Integrated isolation data in the model database
- Extensive graphical and tabular reporting options
- Enhanced load handling for modified load removal based on closed-valve locations
- Isolation polygons to select isolation areas over areas defined by regulating valves and facilities
- Better design to meet DOT and/or state utility commission requirements

## Connect to Your CIS

AIM and the Customer Management Module (CMM) can work together to generate an easy link between isolated zones in your hydraulic model and your existing CIS data. The link allows you to quickly and graphically identify customers affected by an isolated region. The reporting capability allows you to quickly report to your field staff and customer service department.

### GL Industrial Services

Holywell Park, Ashby Road, Loughborough  
Leicestershire LE11 3GR, UK

Phone: +44 (0)1509 282000

Fax: +44 (0)1509 282525

software@gl-group.com · [www.gl-group.com/software](http://www.gl-group.com/software)