

Extend the power of your solution

Extend the power of your business solution with complementing products and services from GL. GL's full line of gas distribution offerings ensures that you get the right solution for your exact business needs. GL can help you leverage your asset investment by ensuring the accuracy of your company's data, integrating your information systems, and turning your asset data into actionable intelligence available to decision-makers across your company.

Related Services

GL can also provide services to complete your solution, such as historical data load, custom report design, systems integration, custom procedures, extended GIS functionality and integration, additional facilities and events handling, and installation and configuration to meet your exact needs.

Regulator Station Analysis is another valuable service that evaluates overpressure protection and helps you identify and address insufficient overpressure protection problems. Essentials partners well with RSA, providing alerts for RSA when regulator station data changes.

The GL Advantage

Industry-leading Experts Delivering World-Class Solutions

GL's comprehensive knowledge and experience in the gas industry is unmatched around the world. Not only do we supply you with software products tailored to your individual needs, but we also offer comprehensive services relating to all safety and efficiency aspects of managing, maintaining and investing in a distribution network.

Obsessive 24/7 Technical Support

When you choose GL, you're not just getting the world's best asset performance knowledge capability, you're also getting the most obsessive technical support in the industry. Our team of professional engineers is committed to delivering world-class support, training and education to you. Rest assured that our 24/7 technical support team is ready to help you get the most out of our software solutions.

Strong Integration and Partnerships

GL's Essentials product is unrivaled in its configurability and flexibility, as well as its ability to integrate with other applications and GIS systems. Essentials's architecture integrates directly with the ESRI® ArcGIS® environment to harness the stored asset data. GL proudly partners with ESRI, Miner and Miner™ and other GIS and technology leaders, to bring you the most powerful and comprehensive solutions available.

GL Industrial Services

Region Europe

Germanischer Lloyd Industrial Services GmbH
Head Office
Steinhof 9, 20459 Hamburg, Germany
Phone: +49 40 36149-777
Fax: +49 40 36149-1781
oilandgas@gl-group.com

GL Industrial Services UK Ltd

Holywell Park, Ashby Road
Loughborough, Leicestershire
LE11 3GR, United Kingdom
Phone: +44 1509 282000
Fax: +44 1509 283131
oilandgas@gl-group.com

Region Middle East/Africa

Germanischer Lloyd Industrial Services Egypt Ltd
66, Cornich El-Nile, Maadi
Zahret El-Maadi Tower
34th Floor, Apartment 2
11431 Cairo, Arab Republic of Egypt
Phone: +20 2 25287 295, -296
Fax: +20 2 25287294
oilandgas@gl-group.com

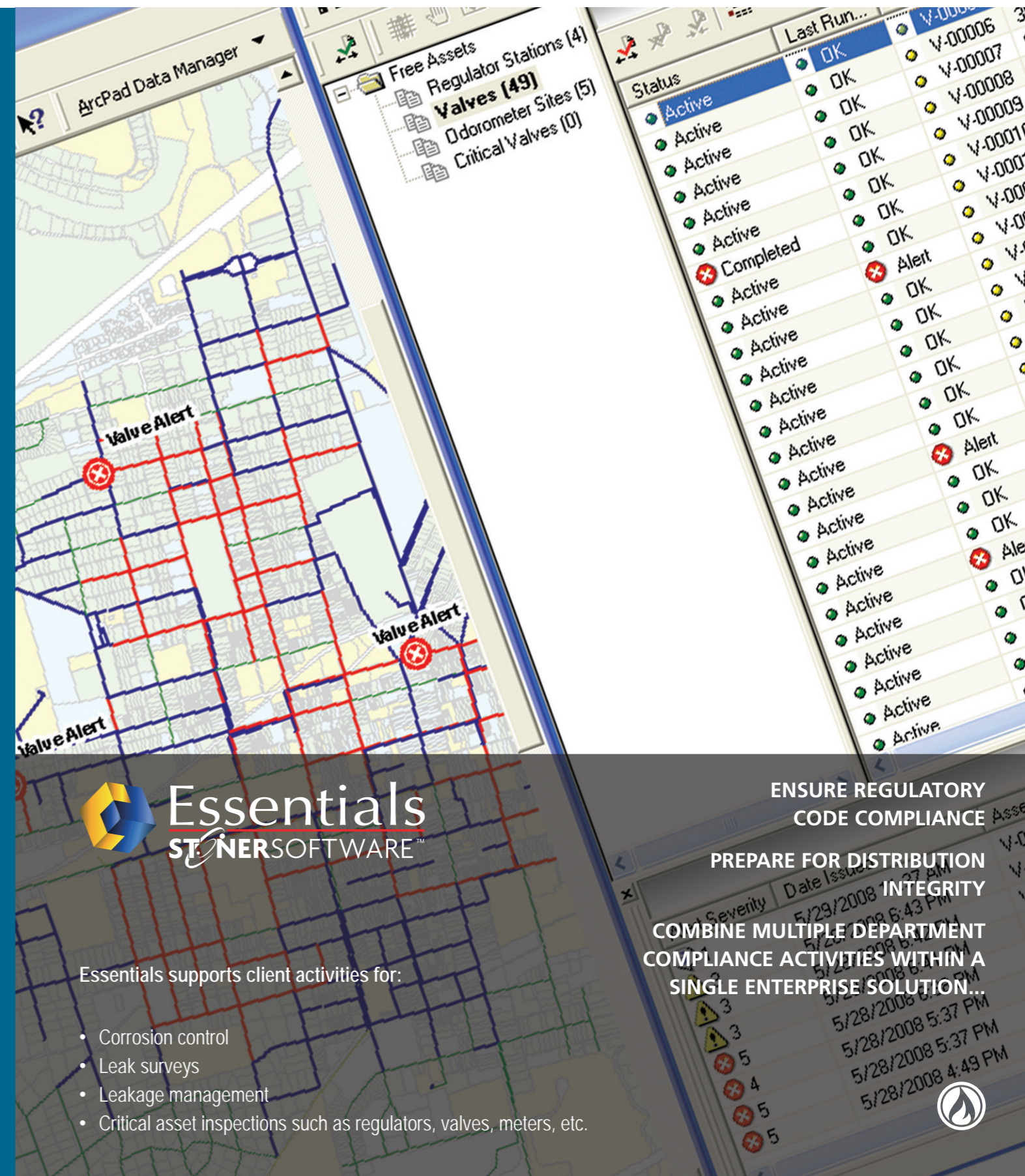
Region Asia/Pacific

Germanischer Lloyd GLM Sdn. Bhd.
Level 39, Menara Ambank
8, Jalan Yap Kwan Seng
50450 Kuala Lumpur, Malaysia
Phone: +60 3 2161088
Fax: +60 3 21610099
oilandgas@gl-group.com

Region Americas

GL Industrial Services USA, Inc.
5177 Richmond Ave., Suite 900
Houston, TX 77056
United States of America
Phone: +1 713 5867000
Fax: +1 713 5867007
oilandgas@gl-group.com

www.gl-group.com



Essentials supports client activities for:

- Corrosion control
- Leak surveys
- Leakage management
- Critical asset inspections such as regulators, valves, meters, etc.

ENSURE REGULATORY
CODE COMPLIANCE
PREPARE FOR DISTRIBUTION
COMBINE MULTIPLE DEPARTMENT
COMPLIANCE ACTIVITIES WITHIN A
SINGLE ENTERPRISE SOLUTION...



Germanischer Lloyd's (GL) Essentials provides a single product solution for a variety of gas distribution and transmission regulatory compliance activities. The enterprise system architecture efficiently manages a full range of inspection and survey processes, including:

- Corrosion control
- Leaks surveys
- Leakage management
- Critical asset inspection

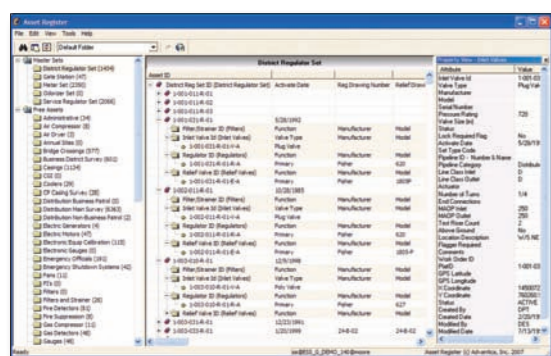
End-to-end compliance management

Essentials is comprised of a suite of fully integrated modules that automate data management, resource allocation and scheduling, field data collection activities and historical results archiving.

The **Asset Register** module provides a comprehensive data repository for network assets, events and survey area definitions.

The **Scheduling and Tracking** module manages the scheduling and resourcing of compliance activities. It also provides an intuitive user interface to review and analyze historical archives.

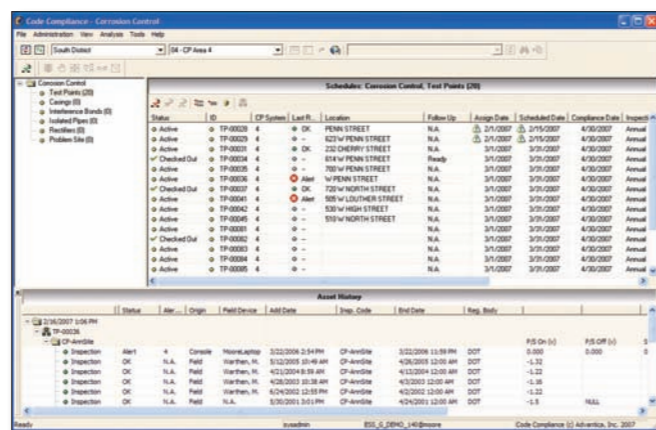
The **Field Manager** component automates field collection activities with easy-to-use, configurable electronic data forms.



Increase productivity

Essentials standardizes compliance-related activities for a range of inspection and survey processes with a single, easy-to-use application thereby eliminating the costs associated with individual department solutions. The solution offers a host of features to enhance staff productivity:

- Essentials automatically calculates compliance dates and reschedules activities with the completion of current cycle activities. Support for **federally-defined inspection intervals and grace periods** is built right in.
- Essentials maintains resource assignments from one cycle to the next, eliminating the need for re-assignment and resource leveling.
- Essentials' pre-defined management reports help plan resources and ensure work is completed on time.
- Direct online access to historical records to support regulatory audits.



Avoid costly fines

Meeting compliance requirements ensures that mandated activities are completed on time and within the prescribed time frame. Essentials monitors these time frames and deadlines and provides warnings to back office users when activities fall behind on the schedule or are in danger of falling out of compliance.

Powerful asset data management

Essentials' Asset Register allows you to organize and manage a variety of network assets in one centralized location. User friendly interfaces allow you to view, edit, validate and update your assets, leakage records and survey area definitions.

Enhanced features allow you to define new asset types to be maintained or to extend data maintained for existing assets without specialized database administrators.

When integrated with ESRI® ArcMap™, Essentials' Asset Register can augment GIS feature definitions with detailed engineering and device settings information not typically stored in a GIS.

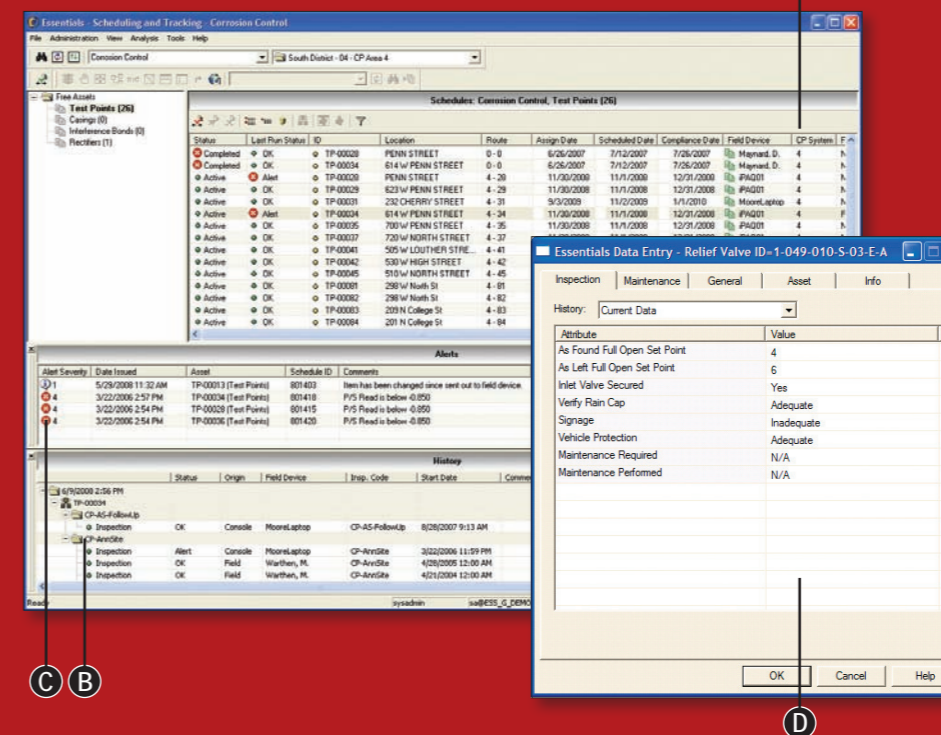
Asset Register can also serve as a repository for collecting, storing and maintaining asset data before acquiring a GIS.

Flexible field interactivity

Essentials is field-ready, enabling your staff to automate the distribution of work assignments to field crews and facilitate the collection of inspection and survey results in easy-to-use electronic forms. Essentials' Field Manager module integrates with mobile laptops and hand-held PDAs to allow you to deploy the right device for the right job.

In addition to collecting inspection and survey data, Field Manager can be used to **identify and define new assets** or leak locations while in the field. Information maintained in the Asset Register can also be updated while in the field to ensure the ongoing accuracy and quality of your enterprise data.

Powerful features meet ease-of-use



- A The Scheduling and Tracking module allows you to schedule and monitor activities for all assets.
- B History window provides archive of all inspections and repairs to support regulatory audits.
- C Alerts indicate field abnormalities requiring follow up action.
- D The integrated field component runs on a laptop or handheld device to eliminate paper-based processes and facilitate data validation in the field.

Robust system features

Seamless GIS integration

Essentials delivers out of the box ESRI ArcGIS™ integration for managing compliance activities for assets defined in your GIS. By working with your GIS, Essentials eliminates costly, redundant data maintenance tasks. Essentials' open architecture also facilitates integration with other existing work management systems or customer information systems.

Automated compliance date calculation and scheduling

Essentials automates federally-required compliance date calculations and allows you to view assets and their respective scheduling information sorted by type, location and status. It also provides warnings to notify you when activities are behind schedule.

Inspection and results monitoring

Essentials keeps your best interests in mind by reviewing the results of inspections and surveys and providing alerts for abnormal conditions discovered in the field. Depending on the severity of the alert, follow up inspection or maintenance activities can then be scheduled and monitored.

Enterprise Database

Essentials relies on a robust, multi-user database. The common database also offers a central location for database administration and backup, easing data maintenance and data sharing.

Robust resource management

Essentials maintains and manages both user and field device assignments. Schedules and activities can be easily grouped and reassigned from one resource to another to ensure proper resource allocation and timely work completion. Re-assignments can be permanent or performed on a one-time basis to accommodate staff who may have fallen behind schedule or are temporarily unavailable to perform work due to illness, vacation or other circumstances.

Extensible reporting

Essentials offers predefined reports and summaries that allow you to review compliance and inspection activities and monitor upcoming assignments and workloads. Clients can easily add customized reports through a standard industry report-building environment.

Flexible and configurable

Essentials is flexible, open and configurable. The solution can be configured to accommodate almost any business process involving cyclical inspection activities. Inspection frequencies, electronic form contents and asset definitions are all defined via database parameters allowing Essentials to be configured for each individual utility's business practice without the need for costly software customizations.